

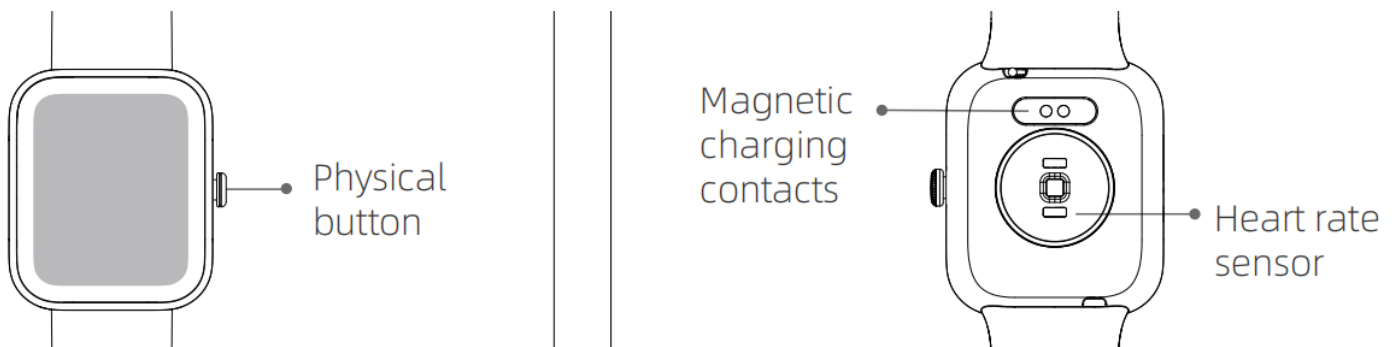


## User Manual WS-2388

# NEO FIT SMARTBAND

Thank you for purchasing the **Sami** wearable WS-2388. Read the instructions carefully to obtain optimum results and preserve it for future reference.

### DESCRIPTION OF THE WEARABLE.

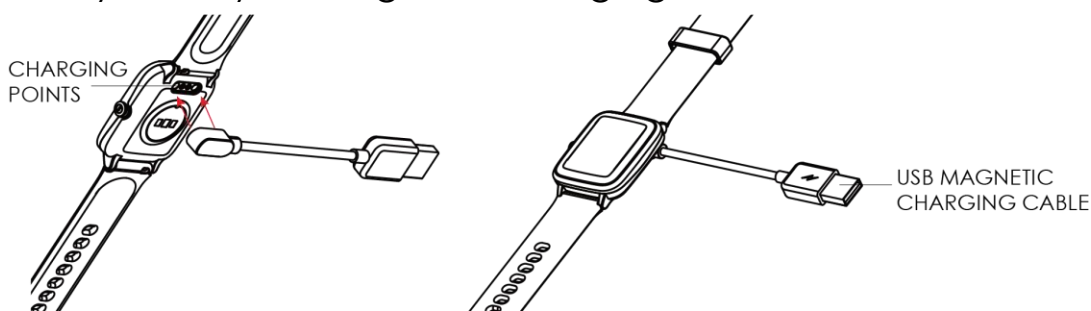


### CONTENTS.

Wearable, USB magnetic charging cable, instruction manual.

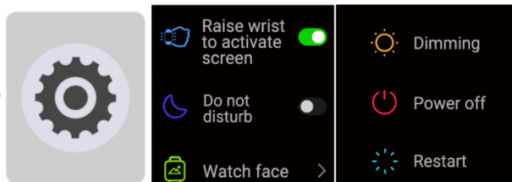
### CHARGING.

Connect the device to a computer or laptop with the USB Magnetic cable for charging. Put in contact the magnetic end of the USB cable with the charging points positioned in the back of your device. Kindly use only the USB cable included with the wearable. If you use a power adapter for charging, the output of the power adapter should be 5V, 1A. Charging time: **1-2** hours approx. Please charge the device fully before using it. Take care with the magnet side of the cable, if you connect to the AC and you have contact with a metal surface, you may damage the charging cable.



## HOW TO POWER ON / POWER OFF?

- 1) To turn ON the smart band, long press the side button for a few seconds. The side button is situated in the right of the of the screen.
- 2) To turn OFF the smart band, while the device is in the home screen menu, slide on the screen from the right to the left and then from the bottom to the top to change between the different menus of the device. Tap on the settings icon to enter in the settings menu, slide again in the screen from the bottom to the top until you see the shutdown icon, tap in the icon and confirm to shutdown to make it power off.

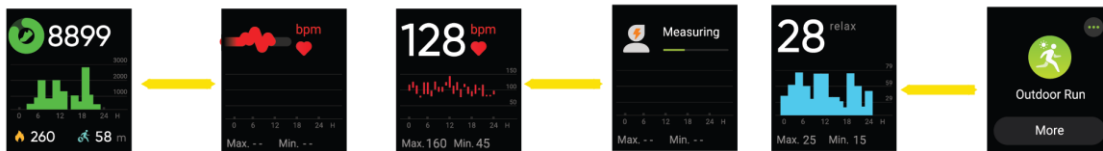


## HOW TO CONTROL?

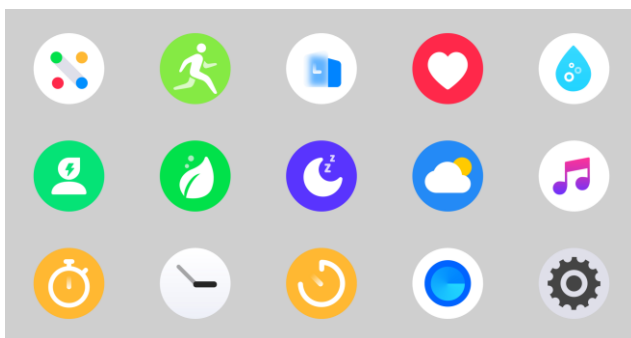
This device is equipped with a full touch display screen, it supports full screen touch control.

- 1) In the home page slide the screen as in the following diagram to enter to the different interfaces :

## TOUCH SCREEN



## BUTTON PRESS



- 1) Short tap in the icon to select/enter in that menu. In the submenus slide from left/right or top/bottom to go to the next/previous page. Short press the side button to return to the previous interface.
- 2) In the home page, long press the screen for a few seconds until the screen zooms out, then slide the screen up or down and select the digital clock style you prefer to change it.
- 3) You can download and install more dials on the dial market by the app.

## GETTING STARTED:

### - For Android

1) How to obtain the BT Connection APK (**VeryFit**)

Search for the **VeryFit APP** in the Play Store; download it and install it in your Android smartphone, or go to our **website [www.sami.es](http://www.sami.es)** and download the application.

2) Installation of the **VeryFit** APK.

When installing the **VeryFit** application on your Android, you must allow all the Application Permissions, allow this **VeryFit** app auto run.

The first time you run this **VeryFit app**, it will ask you to Enable Notifications, please tap OK and tap the **VeryFit** and confirm OK. You must tap OK/Allow/Pair/Yes/Confirm for any pop-up request. On your Android permission management, allow all application permissions.

3) How to make the wearable pair with your Android smart phone?

\*First, turn on the Bluetooth of your Phone.

\*Second, run the **VeryFit** app on your Phone, on the home page of **VeryFit**, find the pairing request by the setting all your values requested and then select "**watch**". You must have the screen of the watch on and the APP will search for new Bluetooth device(s), when the available Bluetooth device displays, please select **WS-2388** (the BT name of this device). Select the device on the app to make it pair. Select "**confirm tick**" on the watch and the pairing will be finished in a few seconds. When you pair for the first time, the **VeryFit** app will ask you to enable GPS and Bluetooth, and authorize **VeryFit** to get access to the location service while using the app. Please accept all the requests for the correct functioning of the device. When you finish select OK/Confirm/Allow for any pop-up request.

4) In the case that on the watch you have the QR CODE on the screen, then in the APP **VeryFit** click the icon of scan on the top left of the menu and scan the qr code of the watch with the camera.

**Important:** To enable all notifications of different softwares such as WhatsApp, Facebook, Skype, Twitter, you will need to turn on the notifications on the APP manually. On the **VeryFit** homepage, select the icon "**Device**" (situated on the right bottom of the screen), → select "**W: ✓ 388**" → select "**message notification**" → turn on "**Allow notification**" and turn on all the APP notifications you want to active. To confirm you must click on the icon located on the top right.

### - For iPhone

1) How to obtain the BT Connection APP (**VeryFit**)

Search for the **VeryFit APP** in the APP Store; download it and install it in your iOS smartphone

2) Installation of the **VeryFit** APP.

When installing the **VeryFit** application on your iOS, you must allow all the Application Permissions, allow this **VeryFit** app auto run.

The first time you run this **VeryFit app**, it will ask you to Enable Notifications, please tap OK and tap the **VeryFit** and confirm OK. You must tap OK/Allow/Pair/Yes/Confirm for any pop-up request. On your Android permission management, allow all application permissions.

3) How to make the wearable pair with your Android smart phone?

\*First, turn on the Bluetooth of your Phone.

\*Second, run the **VeryFit** app on your Phone, on the home page of **VeryFit**, find the pairing request by the setting all your values requested and then select **“watch”**. You must have the screen of the watch on and the APP will search for new Bluetooth device(s), when the available Bluetooth device displays, please select **WS-2388** (the BT name of this device). Select the device on the app to make it pair. Select **“confirm tick” on the watch** and the pairing will be finished in a few seconds. When you pair for the first time, the **VeryFit** app will ask you to enable GPS and Bluetooth, and authorize **VeryFit** to get access to the location service while using the app. Please accept all the requests for the correct functioning of the device. When you finish select OK/Confirm/Allow for any pop-up request.

4) In the case that on the watch you have the QR CODE on the screen, then in the APP **VeryFit** click the icon of scan on the top left of the menu and scan the qr code of the watch with the camera.

\* Now you can start using your desired functions of the smart band.

**Important:** To enable all notifications of different softwares such as WhatsApp, Facebook, Skype, Twitter, you will need to turn on the notifications on the APP manually. On the **VeryFit** homepage, select the icon **“Device”** (situated on the right bottom of the screen), → select **“WS-2388”** → select **“message notification”** → turn on **“Allow notification”** and turn on all the APP notifications you want to active. To confirm you must click on the icon ✓ located on the top right

## PRODUCT FEATURES

### BLUETOOTH (BLE 5.0)

**TOUCH SCREEN.** TFT LCD 1.50" full touch screen with glass

**BUILT IN VIBRATING MOTOR**

**BUILT IN HEART RATE SENSOR**

**BUILT IN GRAVITY SENSOR**

**GESTURE CONTROL TO LIGHT UP THE DISPLAY SCREEN**

**ALLUMINIUM MIDDLE FRAME**

**WATER PROOF 5 ATM**

1) Time/Date/Battery displaying

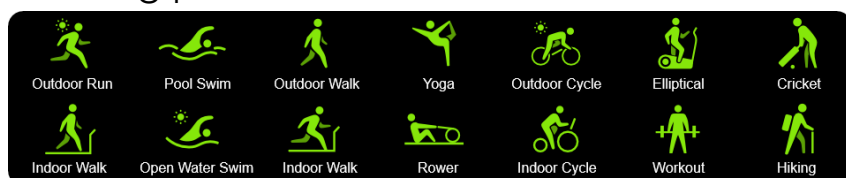
2) Health data



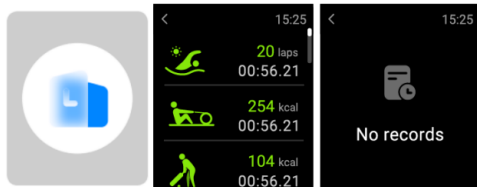
3) Sports – different sport modes including Outdoor Run/Indoor Run/Outdoor walk/Indoor walk /Hiking/Outdoor cycle/Cricket/Yoga/Indoor cycle/Workout/Pool swim/ Open water swim/Rower/Elliptical.

Enter to the sports mode by selecting the sports icon, → select the sport type → enter the sports countdown automatically.

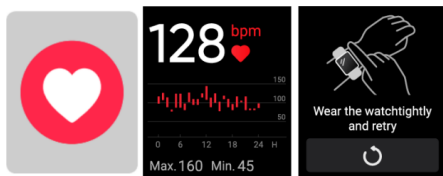
During sports, to pause sports short press the side button, and to restore sports short press the side button again. To end up sports long press the icon on the screen and confirm end.



#### 4) Exercise record



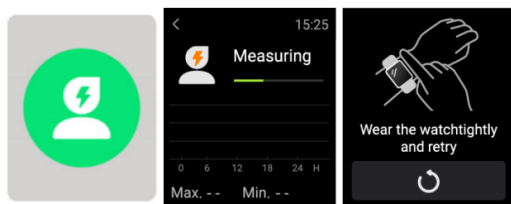
#### 5) Heart Rate



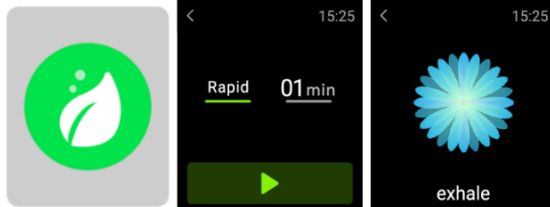
#### 6) Blood oxygen



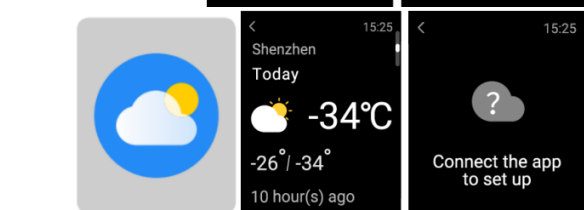
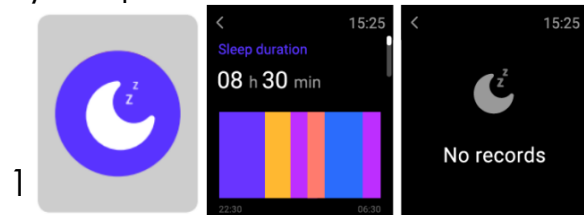
#### 7) Stress level measure



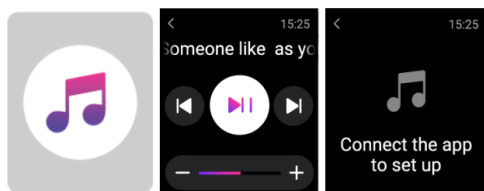
#### 8) Breathe Training: Helps you regulate your breathing and relax your mood.



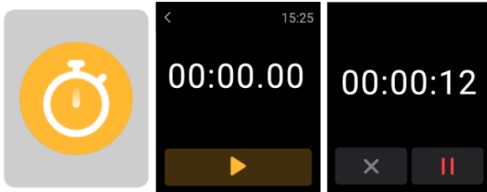
#### 9) Sleep



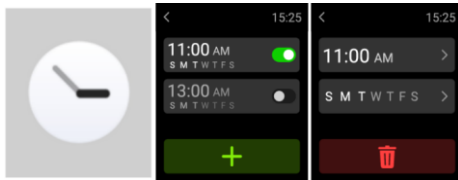
#### 11) Music control – control music via bt on your mobile. Watch cannot playback or store music



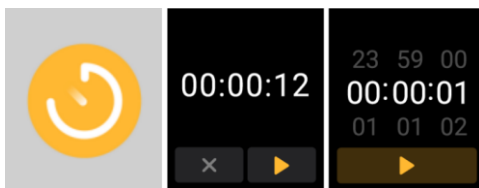
## 12) Stopwatch



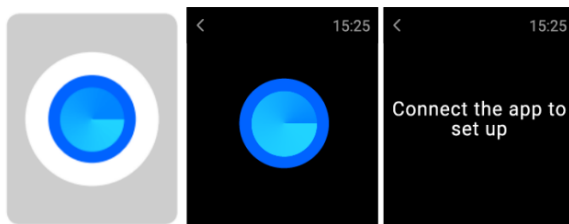
## 13) Alarm Clock



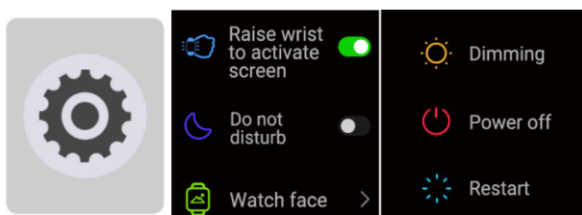
## 14) Timer



## 15) Find phone



## 16) Settings: Raise wrist to on watch/Do not disturb/Watch face/Dimming/Power off/Restart/Reset/ About



Data can be sync from the wearable to the smart phone on the **VeryFit** APK/APP.

Your smart phone will synchronize when the Bluetooth is paired with this device.

## FUNCTIONS

**PHONE CALL NOTIFICATION** - vibrating reminder for incoming phone calls and display on screen. This function needs to be turned on manually at the **VeryFit** APK/APP.

**MESSAGE NOTIFICATION** - vibrating reminder for incoming messages and display on screen, including SMS, WhatsApp, Facebook, Twitter, Skype messages, etc. This function needs to be turned on manually at the **VeryFit** APK/APP. Memory for 10 messages.

**CLOCK SCREENS** (Different home digital clocks) - In the home screen of the smart band, long press the screen for a few seconds to change the style of the digital clock. You can also select the cloud dials from the APK/APP

**SLEEP MONITOR** - supported on the watch and **VeryFit** APK/APP

**ALARM CLOCK** - supported on the watch and **VeryFit** APK/APP

**FIND THE DEVICE** (Looking for your mobile phone) supported on the **VeryFit** APK/APP

**SEDENTARY REMINDER (REMIND TO MOVE)** –set it on the **VeryFit** APK/APP

**Do Not Disturb Mode** – set it on the **VeryFit** APK/APP

**GESTURE CONTROL** (Raise your hand to light up the screen).

**GPS MAP TRACE:** view it on the BT APP/APK **VeryFit** when you do your sports.

## **TECHNICAL SPECIFICATIONS:**

**Display screen:** TFT LCD screen 1.50". Full colour touch screen

**Screen resolution:** 240x280pixels.

**Internal Memory:** 64Mb Nor Flash

**MCU:** Nordic GR5515

**Touch Sensor:** CST716SE (hynitron)

**Accleration and gyroscopes:** STK8321 (sitronix-sensortek)

**Heart rate sensor:** HX3690Q

**Charge I/O port :** USB magnetic charging cable

**Battery:** Built in Li-Polymer 300mAh

**Stand by time:** 20-25 DAYS

**Working time:** 8-12 DAYS

**Bluetooth:** BLE 5.0

**Water-resist Rating:** 5ATM this device resists 50 meters waterproof (5ATM). Not valid for hot water shower due to vapor.

**Weight:** 31 g

# Declaration of Conformity

Hereby we,

Name of manufacturer: SANTOSHI SL  
Address: CALLE FELIPE ASENJO N.56  
Zip code & City: 28947 - FUENLABRADA ( MADRID )  
Country: SPAIN

declare that this DoC is issued under our sole responsibility and that this product:

Product description: Smart Band  
Type designation(s): WS-2388  
Trademark: SAMI WEARABLE

is in conformity with the relevant Union harmonization legislation:

**DIRECTIVE EMC 2014/30/EU**

**DIRECTIVE LVD 2014/35/EU**

**Standard CE (RED): DIRECTIVE 2014/53/EU**

**Standard RoHS: 2011/65/EU: (RoHS) Restriction of Hazardous Substance.**

**with reference to the following standards applied:**

EN 60950-1: 2006+A11:2009+A1:2010+A12:2011+A2:2013

EN 62479:2010

EN 301 489-1 V2.1.1 (2017-02)

EN 301 489-17 V3.1.1 (2017-02)

EN 300 328 V2.1.1 (2016-11)



Signature

Full name: VISHAL MIRPURI

Position: ADMINISTRATOR

Date: 29/05/2024